

Overview of the Pan- Canadian Joint Consortium for School Health Evaluation

November 14, 2023

AGENDA

01. Introductions

02. Logic Model

03. Evaluation Questions

04. Evaluation Timeline

ABOUT COLLECTIVE RESULTS



WHO WE SERVE

- Not-for-profit organizations
- Charities
- Public sector organizations

WHY WE SERVE

We want to help build bridges between great intentions and great outcomes

We understand challenges with:

- Capacity
- Political pressures
- Finding time

WHAT WE DO

- Take on foundational work
- Help define and achieve goals
- Help build strategies
- Find innovative upstream solutions
- Individual projects or fully integrated into your organization

PROJECT TEAM

Tin Vo, Team Lead & Credentialed Evaluator
Over 10 years experience in the public health, social services, and higher education sectors leading evaluation projects that embed an equity lens.

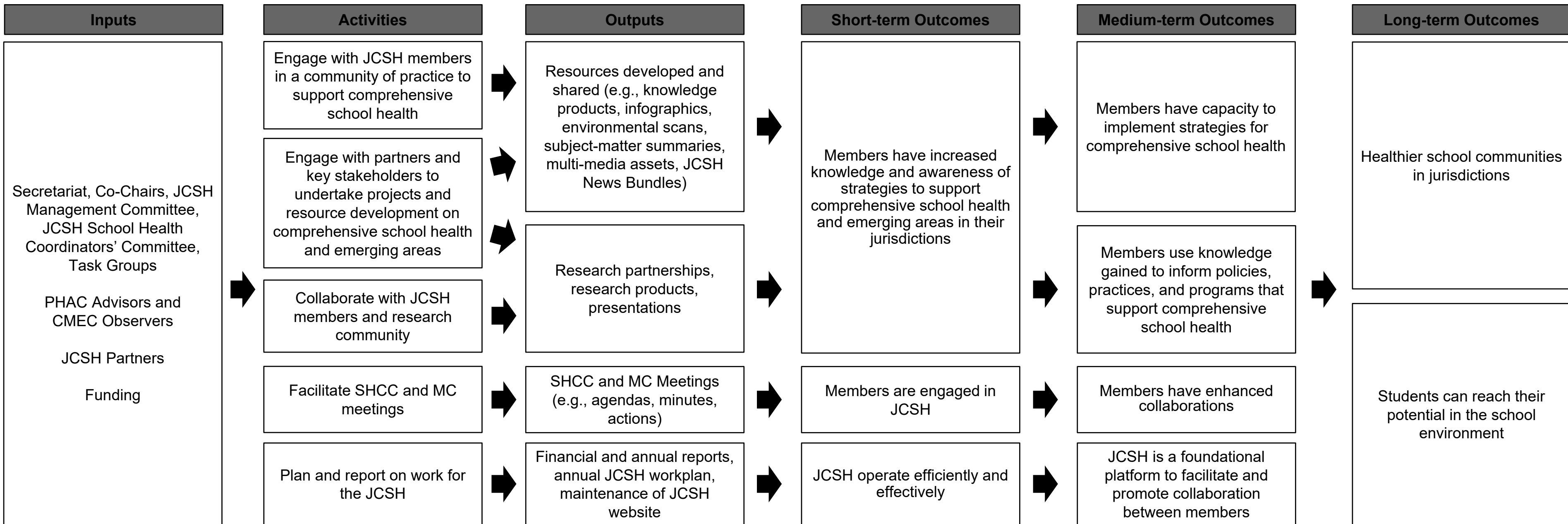
Denia Hurst, Consultant
2 years experience leading and supporting program evaluation projects within higher education and not-for-profit settings.



Logic Model: Pan-Canadian Joint Consortium for School Health

Impact: Children and youth in Canada are thriving in school communities that are committed to health, well-being and learning

Target Population: School-age children and youth in Canada



Comprehensive School Health, Health Promoting Schools

Risks: Members may or may not engage in meetings and may or may not collaborate in activities; diminished capacity among members to engage; unclear processes and communication channels; varied length of membership with the JCSH impact knowledge and awareness of the JCSH work (e.g., new members, shifting positions)

Assumptions: Members attend meetings and are involved in activities (e.g., taskgroups); members contribute to priorities; members have clear understanding of JCSH mandate, priorities, activities, roles and responsibilities

Contextual Factors: Time constraints; federal, provincial and territorial mandate and budgetary shifts

Risks: Variations in annual workplans may impact outcomes; members are disengaged; new and emerging issues impact JCSH attention

Assumptions: JCSH will complete goals according to their mandate; Completion of the majority of the goals will contribute to the anticipated outcomes; Opportunities for collaboration are brought to the attention of the JCSH; projects are aligned and contribute to JCSH and member priorities; managing expectations of stakeholders

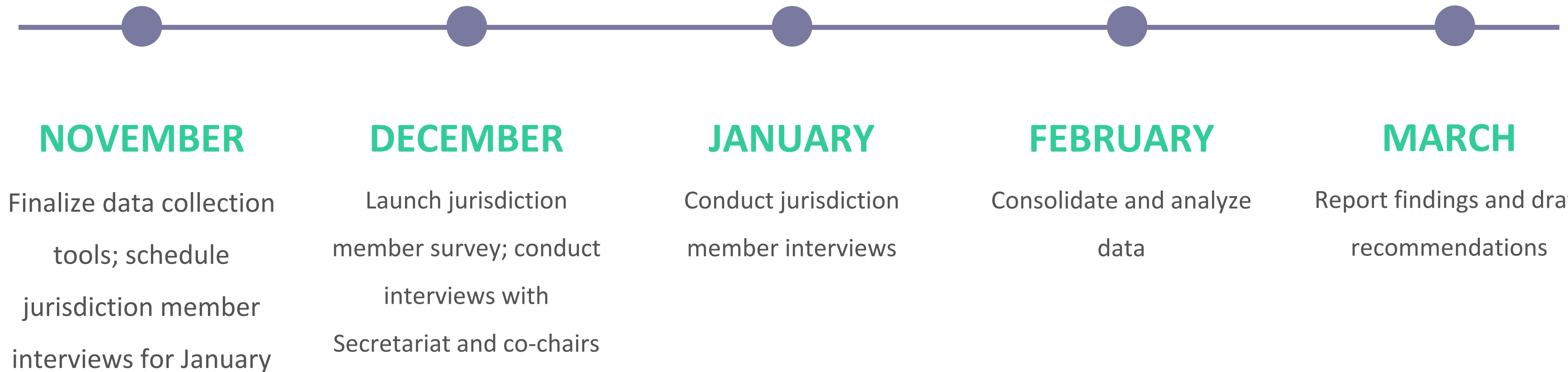
Potential Unintended Outcomes: Misalignment in priorities between jurisdictions and JCSH

Evaluation Questions

Process	To what extent is the JCSH being implemented as intended in the current mandate? How can the implementation process be more efficient/streamlined? What is working well and not working well for members in relation to the JCSH operations and structure?
Member Engagement	What is the role of the JCSH in engaging its members? How does the JCSH engage its members? To what extent are JCSH members engaged? What benefits and meaning do they derive from their membership based on their level of engagement and size of jurisdictions? What factors are contributing to their dis/engagement? How does the JCSH align with membership priorities?
Outcomes	To what extent is the JCSH achieving or contributing to its intended outcomes for the current mandate? Is it on track to meet them? What factors are facilitating or hindering the JCSH from achieving its intended outcomes?



EVALUATION TIMELINE





THANK YOU

www.collectiveresults.ca

